

LOXONE

Datasheet

Part No: 100213

About the product

Electrical Specifications

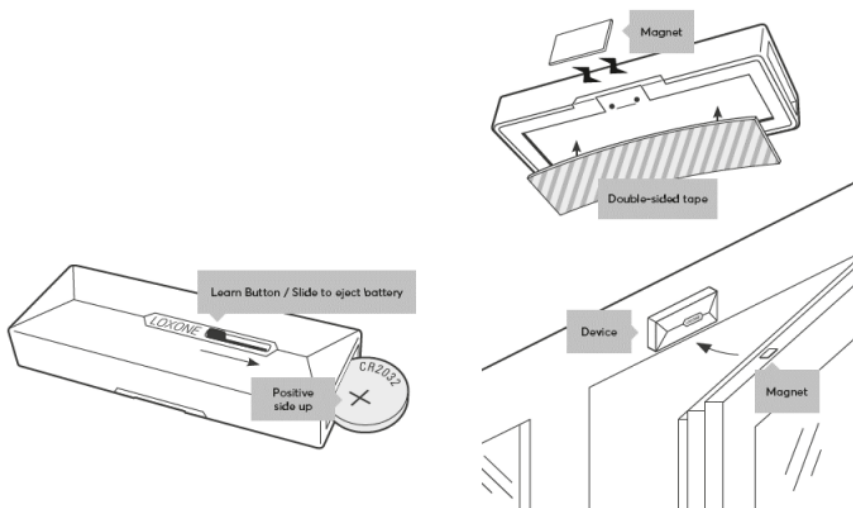
Power Supply	CR2032 battery
Interfaces	LOXONE Air: 868MHz (SRD Band Europe), 4 channels available max. Power 15.1mW e.r.p. 915MHz (ISM Band Region 2), 10 channels available max. Power 13.2mW internal antenna
Sensor	Reed contact
Temperature	0 ... 55°C / 32 ... 131°F
Battery Lifetime	up to 2 years
Pairing button	can also be used as a push button

Ambient Conditions

Humidity	max. 95% r.H. (non condensing)
----------	--------------------------------

Connection Diagram

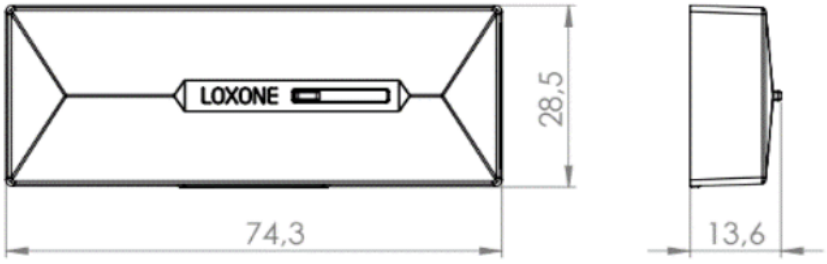
Connection Diagram




Product Characteristics

Colours	Anthracite: RAL7016
Finish	Matte

Weight & Dimensions

Net weight	21 g
Total weight	45 g
Product dimensions	74.3x28.5x13.6mm / 2.92x1.12x0.53" (LxWxH)
Product dimensions drawing	
Pack size	122x80x22mm / 4.80x3.15x0.87" (LxWxH)

Certifications & Standards

Safety class	IP20
Certifications	

Installation must be carried out by a qualified electrician in accordance with the relevant regulations.

Published by

Loxone Electronics GmbH
Smart Home 1
4154 Kollerschlag
Austria
Tel: +43 7287 7070-0
loxone.com

Loxone UK Ltd.
The Forum
Station Road
Theale, RG7 4RA
United Kingdom

Datenblatt

Part No: 100213

Über das Produkt

Elektrische Spezifikationen

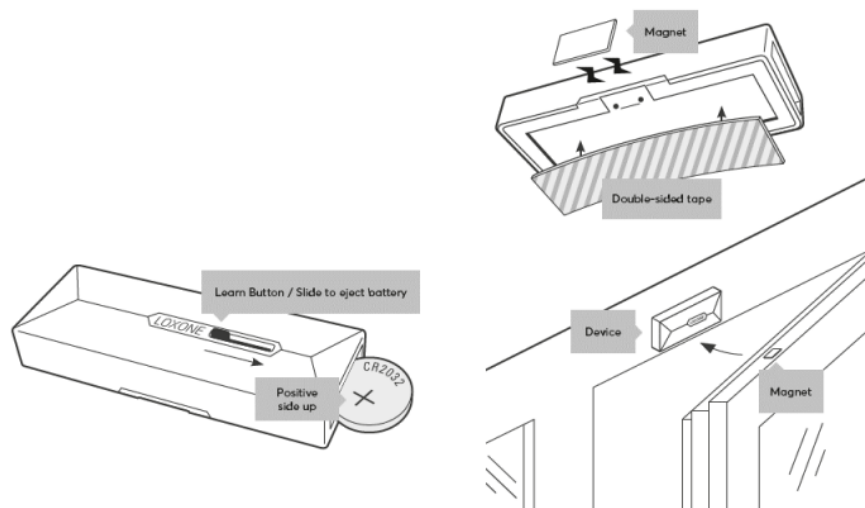
Spannungsversorgung	CR2032 Batterie
Schnittstellen	LOXONE Air: 868MHz (SRD Band Europa), 4 Kanäle wählbar max. Sendeleistung 15,1mW e.r.p. 915MHz (ISM Band Region 2), 10 Kanäle wählbar max. Sendeleistung 13,2mW interne Antenne
Sensor	Reed Kontakt
Temperatur	0 ... 55°C / 32 ... 131°F
Batterie Lebensdauer	bis zu 2 Jahre
Einlertaste	auch als Tasteneingang verwendbar

Umgebungsbedingungen

Luftfeuchtigkeit	max. 95% r.H. (nicht kondensierend)
------------------	-------------------------------------

Anschlussplan

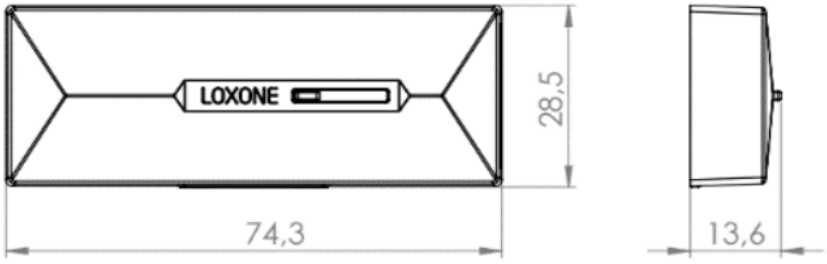
Anschlussplan




Produkteigenschaften

Farbe	Anthrazit: RAL7016
Glanzgrad	Matt

Gewicht & Abmessungen

Nettogewicht	21 g
Bruttogewicht	45 g
Produktmaße	74,3x28,5x13,6mm / 2,92x1,12x0,53" (LxBxH)
Produktmaßzeichnung	
Packmaß	122x80x22mm / 4,80x3,15x0,87" (LxBxH)

Zertifizierungen & Standards

Schutzklasse	IP20
Zertifizierungen	

Die Installation muss von einer qualifizierten Elektrofachkraft gemäß den einschlägigen Vorschriften durchgeführt werden.

Veröffentlicht von

Loxone Electronics GmbH
Smart Home 1
4154 Kollerschlag
Austria
Tel: +43 7287 7070-0
loxone.com

Loxone UK Ltd.
The Forum
Station Road
Theale, RG7 4RA
United Kingdom